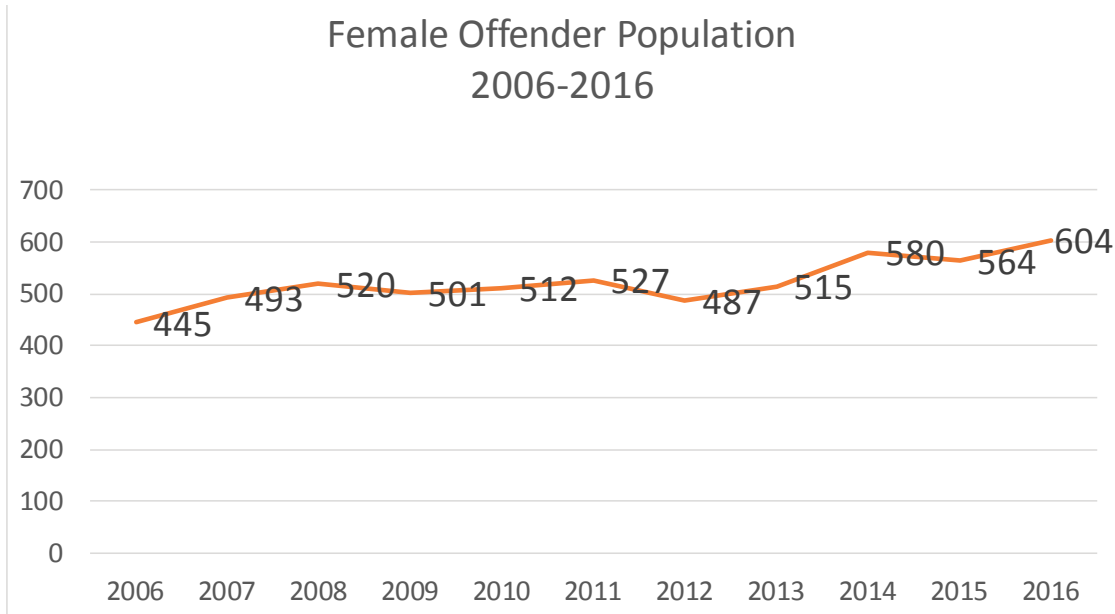




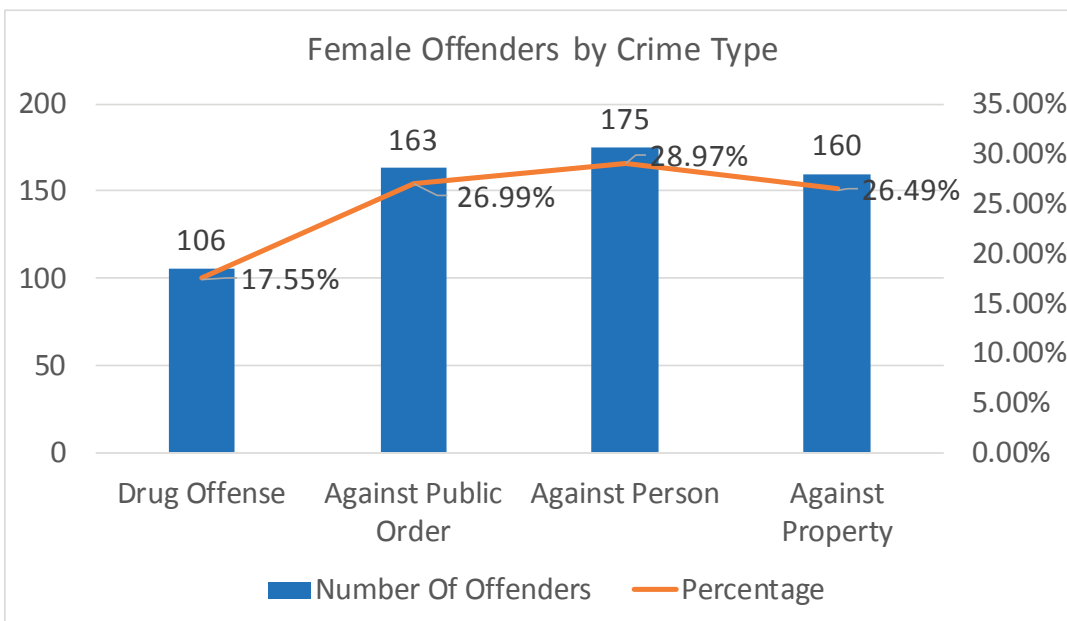
WV Division of Corrections Female Offenders

Data Sheet: 2016



	2006	2007	2008	2009	2010	2011	2012	2013	2014	2015	2016
Male	3831	4172	4433	4507	4496	4602	4713	4840	5201	5220	5283
Female	445	493	520	501	512	527	487	515	580	564	604
Total	4276	4665	4953	5008	5008	5129	5200	5355	5781	5784	5887

In 2016, female offenders made up 10.25% of the WVDOC offender population housed in DOC facilities. These numbers do not include those offenders sentenced to the WVDOC, but were being housed temporarily in a regional jail. This is a 36% increase in the number of female offenders since 2006.

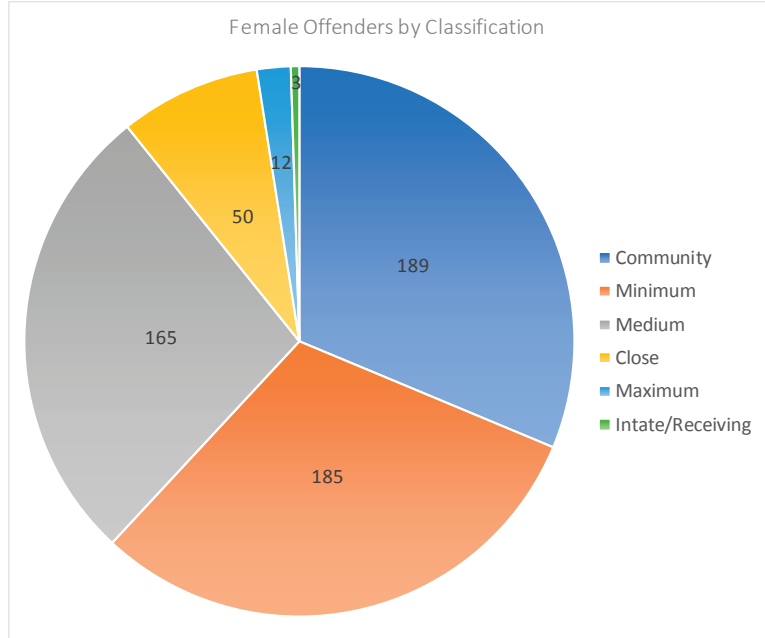


Crimes Against the Person, for example, assault, robbery, etc..., was the largest category of crimes committed by WVDOC female offenders as of Midyear 2016.

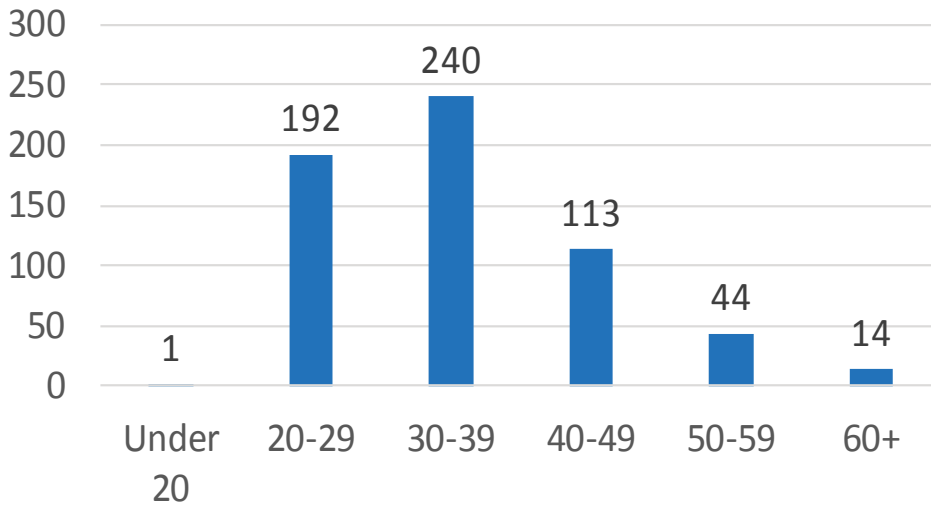


WV Division of Corrections Female Offenders Data Sheet: 2016

In June 2016, nearly 62% of female offenders in WVDOC facilities were classified as Minimum or Community Security Level.



Female Offenders by Age Distribution



The majority of female offenders (72%) in June 2016, were under 40 years of age. Less than 10% were age 50 or over.

As of June 2016, nearly 93% of all female offenders in WVDOC facilities were Caucasian, while just a little over 6% were African American.

Race	Female Offenders
Caucasian/White	559
African American/Black	38
Hispanic	3
Multi-Racial/Other	2
Native American	2